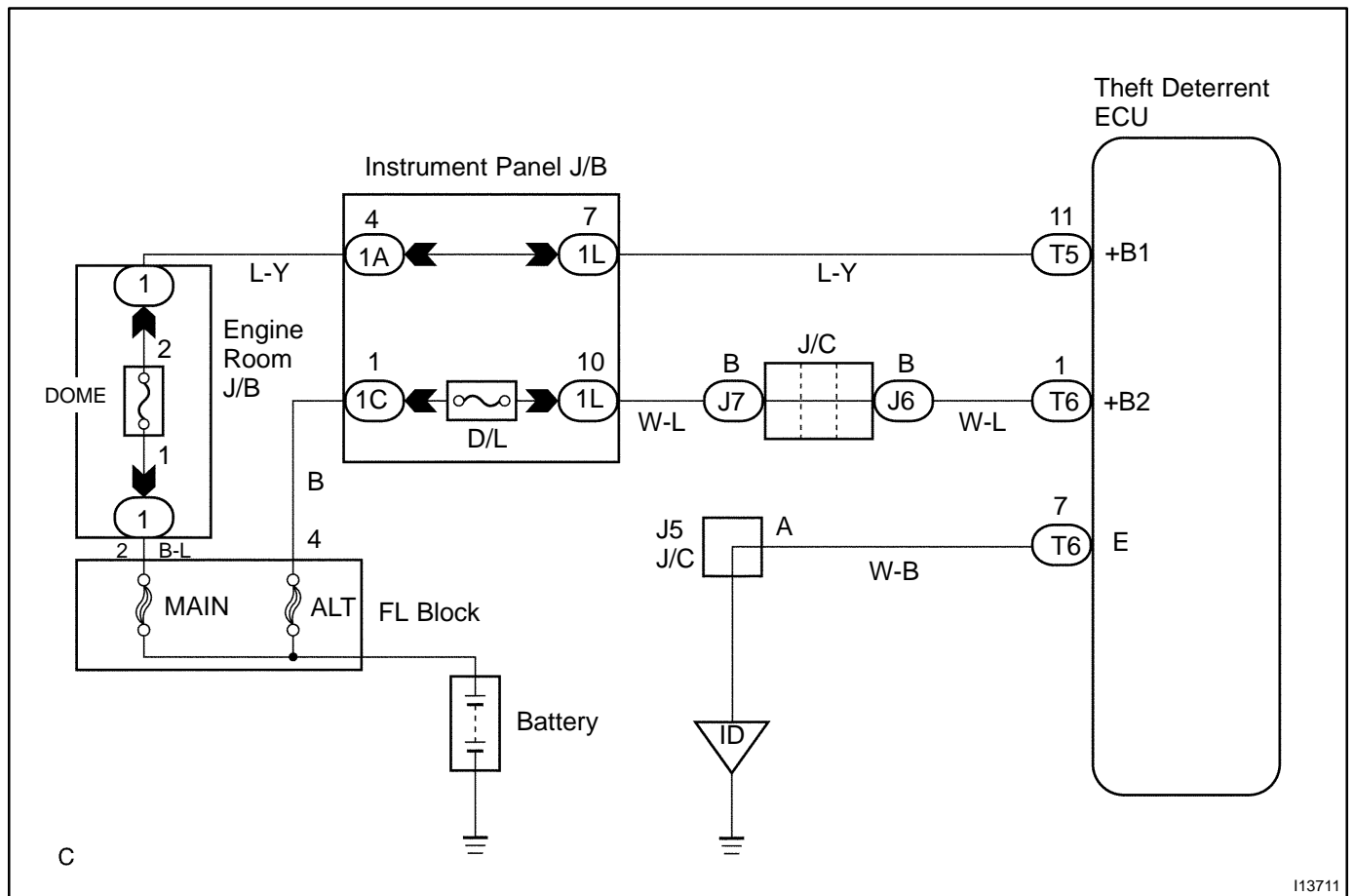


# ECU Power Source Circuit

## CIRCUIT DESCRIPTION

This circuit provides power to operate the theft deterrent ECU.

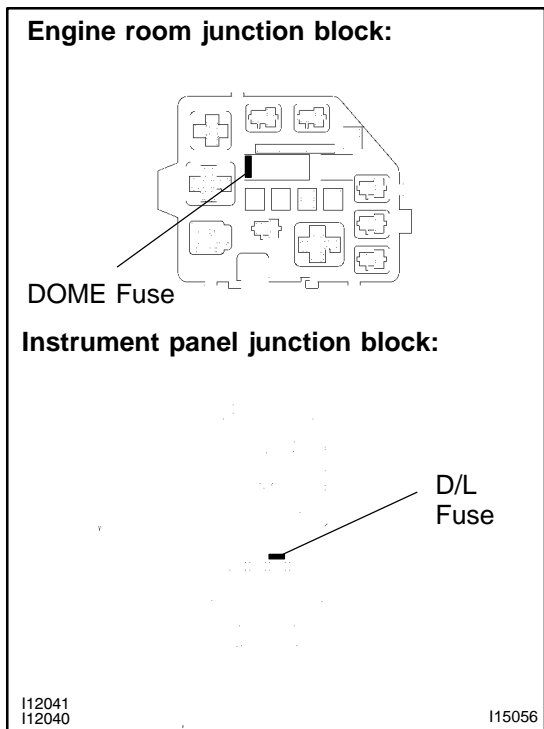
## WIRING DIAGRAM



I13711

# INSPECTION PROCEDURE

**1 Check DOME and D/L fuse.**



**PREPARATION:**

- (a) Remove the DOME fuse from the engine room junction block.
- (b) Remove the D/L fuse from the instrument panel junction block.

**CHECK:**

Check continuity of the DOME and D/L fuse.

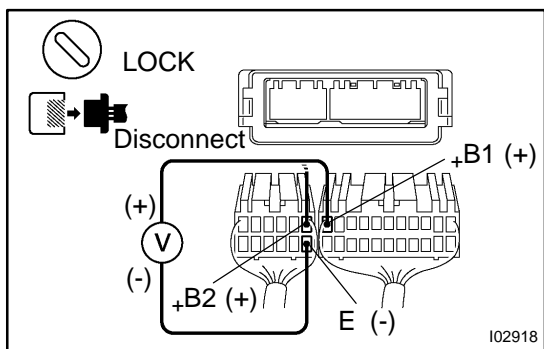
**OK:**

**Continuity**

**NG** Check for short in all the harness and components connected to the DOME and DOOR fuse (See attached wiring diagram).

**OK**

**2 Check voltage between terminals +B1, +B2 and E of theft deterrent ECU connector.**



**PREPARATION:**

- (a) Remove the glove compartment door.
- (b) Disconnect the theft deterrent ECU connector.

**CHECK:**

Measure voltage between terminals +B1, +B2 and E of theft deterrent ECU connector.

**OK:**

**Voltage: 10 - 14 V**

**OK** Proceed to next circuit inspection shown in problem symptoms table (See page [DI-412](#)).

**NG**

3	Check for open in harness and connector between ECU and body ground (See page <a href="#">IN-29</a> ).
---	--

NG

Repair or replace harness or connector.

OK

Check and repair harness and connector between ECU and battery.